



PATCH CORD & PLUG

PATCH CORD

UTP SERIES.....51

ScTP SERIES.....52

MODULAR PLUG

UNSHIELDED SERIES.....53-55

SHIELDED SERIES.....56-57

PATCH CORD & PLUG

We offer plugs in standard configurations to terminate modular cords for patching or workstation applications. Modular cords can be terminated to the exact length needed for neater, more organized installations. The plugs terminate 24~26 AWG (0.51mm~0.40mm) solid or stranded wire.

UTP SERIES

UNSHIELDED TWISTED-PAIR PATCH / LINE CORD (UNSCREENED)

Unshielded twisted-pair line cords are assembly of 4-pair cable with modular plugs crimped on both ends. It offers a high performance alternative to satin modular line cords where crosstalk, EMI, or distance may be considerations.

Cable consists of pairs of 24 AWG (0.51mm) wire, each pair twisted at a rate varying between 2 to 12 twists per foot. Jacket material is either PVC or FRD construction in solid conductor cords. PVC for stranded cords only.

- Individual order of patch cord with solid conductor is available.



MOLDING TYPE

ORDERING INFORMATION

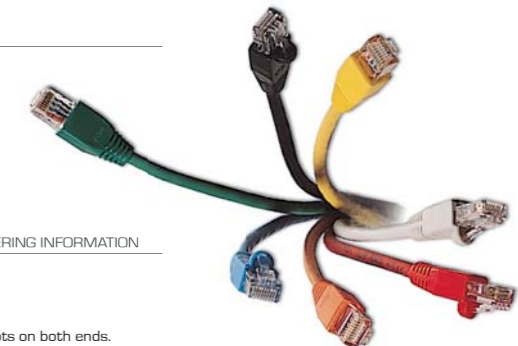
Part No.	Length	Description
UTP801-M-XX-C5eB	1m	UTP 4-pair Stranded wire.
UTP802-M-XX-C5eB	2m	Unshielded plugs W/insert-molded boots on both ends.
UTP803-M-XX-C5eB	3m	RJ45 (8P8C) T568B.
UTP805-M-XX-C5eB	5m	

ASSEMBLY TYPE

ORDERING INFORMATION

Part No.	Length	Description
UTP801-A-XX-C5eB	1m	UTP 4-pair Stranded wire.
UTP802-A-XX-C5eB	2m	Unshielded plugs W/assembled boots on both ends.
UTP803-A-XX-C5eB	3m	RJ45 (8P8C) T568B.
UTP805-A-XX-C5eB	5m	

- T568A wiring scheme is available.



ScTP SERIES

SHIELDLED TWISTED-PAIR PATCH / LINE CORD (SCREENED)

Using shielded twisted-pair line cords and plugs 24 AWG (0.51mm) stranded wire. Aluminum Mylar shielding wrapped around the inner conductors provides good protection from data errors.

A drain wire helps to complete a proper ground connection. Allows long runs with less fear of EMI/RFI. Insulated with best grade of PVC formulation.



MOLDING TYPE

ORDERING INFORMATION

Part No.	Length	Description
STP801-M-XX-C5eB	1m	ScTP 4-pair Stranded wire.
STP802-M-XX-C5eB	2m	Shielded plugs W/ insert-molded boots on both ends.
STP803-M-XX-C5eB	3m	RJ45 (8P8C) T568B.
STP805-M-XX-C5eB	5m	



ASSEMBLY TYPE

ORDERING INFORMATION

Part No.	Length	Description
STP801-A-XX-C5eB	1m	ScTP 4-pair Stranded wire.
STP802-A-XX-C5eB	2m	Shielded plugs W/ assembled boots on both ends.
STP803-A-XX-C5eB	3m	RJ45 (8P8C) T568B.
STP805-A-XX-C5eB	5m	

• T568A wiring scheme is available.

PLUG COVER (BOOT) Material: PVC

ORDERING INFORMATION

The Plug Covers are designed to protect RJ45 modular plugs and cables. It can be used for different dimension cable such as O.D. 5.0mm, 5.5 mm, 6.0mm, and 6.5mm round cable and flat cable.

Part No.	Cable O.D.	Description
SR-50	5.0mm	Strain Relief for RJ45 Plugs. Round cable used.
SR-55	5.5mm	
SR-60	6.0mm	
SR-65	6.5mm	



PLUG COVER (BOOT) Material: PP

ORDERING INFORMATION

The 2-piece Type Plug Covers are designed to protect RJ45 modular plugs and cables. It can be used after assembly for O.D. 6.0mm round cable. Special latch make it easier to release modular plugs.

Part No.	Description
002-C	2-piece Type Strain Relief for Shielded RJ45 Plugs.
002-CL	2-piece Type Strain Relief for Unshielded RJ45 Plugs.



SPECIFICATION

Meet FCC CFR 47 part 68 and IEC 603-7.

MATERIAL

Housing: Polycarbonate (PC).

Contacts: Copper alloy selective Gold over Nickel plating.

MECHANICAL

Cable-to-Plug Tensile Strength: 20 lbs min.

Durability: 750-cycle min.

Operating Temperature: -20°C to 80°C.

ELECTRICAL

Rated Voltage, Current: 30V AC at 1.5A.

Contact Resistance: 20 milli-ohm max.

Dielectric Strength: 1000V AC (RMS).

Insulation Resistance: 500 Mega-ohm min.



UNSHIELDED SERIES

ORDERING INFORMATION

Part No.	Description
88-AR	8P8C for Round cable, Stranded wires used.
88-BR	8P8C for Round cable, Solid wires used.
88-CR	8P8C for Round cable, Stranded & Solid wires used.

Part No.	Description
88-ARS	8P8C for Round cable, Stranded wires used. (Short body)
88-BRS	8P8C for Round cable, Solid wires used. (Short body)
88-BRS2	8P8C for Round cable, Solid wires used. (Short body, 2 Layer)

The HCl 2-piece Type Unshielded RJ45 Plugs are designed for Patch Cord makers. It accept insulation of wires 24~26 AWG (0.51mm~0.40mm) for both solid & stranded wire common used.

FEATURES

Easy assemble and precise alignment.

Excellent performance in NEXT & Attenuation.

SPECIFICATION

Meet FCC CFR 47 part 68 and IEC 603-7.

MATERIAL

Housing & Insert: Polycarbonate (PC), UL94V-0.

Contacts: Phosphor bronze, selective Gold over Nickel plating.

MECHANICAL

Cable-to-Plug Tensile Strength: 20 lbs min.

Durability: 750-cycle min.

Operating Temperature: -20°C to 80°C.

ELECTRICAL

Current Rating, 1.5A max. per circuit.

Contact Resistance: 10 milli-ohm max.

Dielectric Withstanding Voltage: 1000V AC (RMS 60Hz), 1minute.

Insulation Resistance: 500 Mega-ohm min at 500V DC.



UNSHIELDED SERIES

ORDERING INFORMATION

Part No.	Description
002-8-AR	8P8C for Round cable, Stranded wires used.
002-8-BR	8P8C for Round cable, Solid wires used.
002-8-CR	8P8C for Round cable, Stranded & Solid wires used.

STRUCTURE PATENTED

It has solved the problem of how to separate wires for assignment without harming Category 5e performance. We proudly introduce the 2-piece Type Fully Shielded Plug.

EASY TO ASSEMBLE:

All you have to do is strip your cable, insert your wires into our specially designed Insert Unit, Cut the surplus wires at the end of Insert Unit and snap the full product together.

MUCH BETTER NEXT PERFORMANCE:

With the Insert Unit you only have to untwist a very small amount of wire (7mm), which means you will get better NEXT for 300MHz patch cord. In addition, our specially designed Strain-Relief (HC-002-C) holds the cable firmly without flattening or affecting twisted wires.

FULLY SHIELDED:

Our metallic Shield Cover completely encloses the unit, meets the EMI & EMC requirement.

MATERIAL:

Housing & Insert: Polycarbonate (PC), UL94V-0.

Contacts: Phosphor bronze, selective Gold over Nickel plating.

Shield Cover: Brass over Nickel plating.



SHIELDED SERIES

ORDERING INFORMATION

Part No.	Description
002-8S-AR	8P8C for Round cable, shielded W/metal hook, Stranded wires used.
002-8S-BR	8P8C for Round cable, shielded W/metal hook, Solid wires used.
002-8S-CR	8P8C for Round cable, shielded W/metal hook, Stranded & Solid wires used.

SHIELDED SERIES

ORDERING INFORMATION

Part No.	Description
002-8SH-AR	8P8C for Round cable, shielded W/metal hook, Stranded wires used. (Longer body)
002-8SH-BR	8P8C for Round cable, shielded W/metal hook, Solid wires used. (Longer body)
002-8SH-CR	8P8C for Round cable, shielded W/metal hook, Stranded & Solid wires used. (Longer body)



The HCI Fully Shield RJ45 plug is designed for Patch Cord makers. It accepts insulation of wires 24~26 AWG (0.51mm~0.40mm) for both solid & stranded wire common used.

Part No.	Description
88S-AR	8P8C for Round cable, shielded, Stranded wires used.
88S-BR	8P8C for Round cable, shielded, Solid wires used.
88S-CR	8P8C for Round cable, shielded, Stranded & Solid wires used.